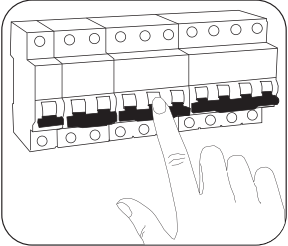
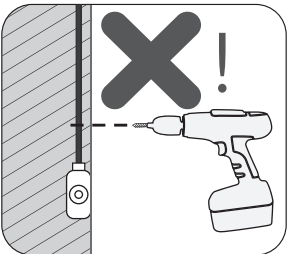


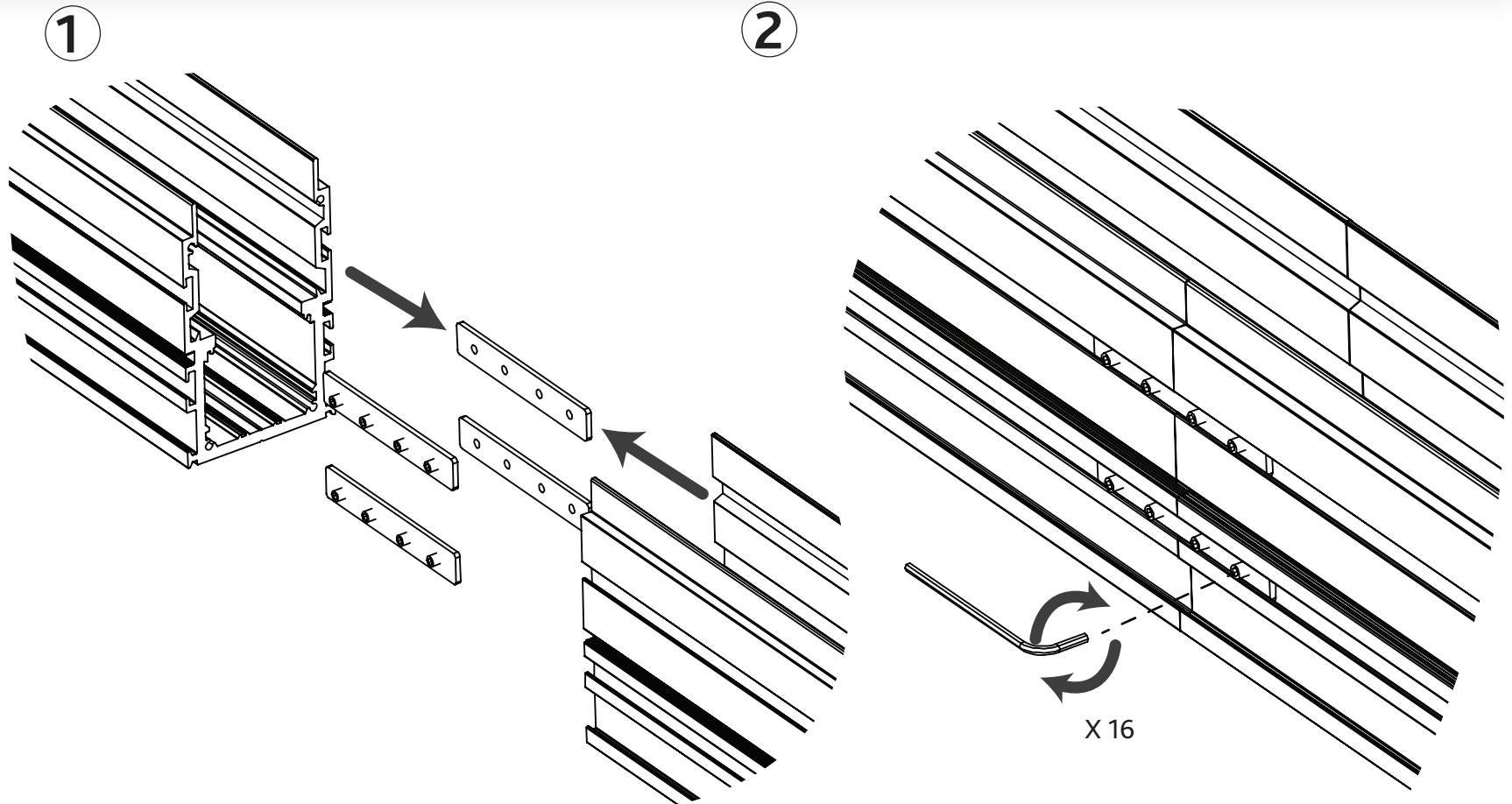
### Check!



TURN OFF POWER!  
COUPER LE COURANT!  
STROM ABSHALTEN!  
CORTE CORRIENTE!



CHECK THE WALL!  
VÉRIFIER LE MUR!  
DIE WAND ÜBERPRÜFEN!  
COMPRUEBE LA PARED!



- Damage will be caused by incorrect input voltage or short circuit
- Ensure access and sufficient free moving air space around products and drivers
- Products and power supply gear must not be live wired
- Protect products from dust & paint during installation and use
- Shielded pair of cables will be required for dimming control signal if applicable
- Plan for loads, driver locations, dimming and suitable cable prior to installing
- For technical assistance contact your local Lumino distributor.
- Use only with class 2 power unit to UL 1310 standard
- Use only with maximum output 24VDC voltage Class 2 power unit

#### ESSENTIAL ACCESSORIES

V36G-JB203-R02 V36G Joining Plate

#### OPTIONAL ACCESSORIES

V36G-B2050-R1 V36G 2050mm Ground Channel for V36I  
V36G-MB201-R1 V36G Ground Channel Spring Clips (10 pk)  
V36G-MB202-R1 V36G Ground Channel End Cap Kit (pair)  
V36G-JB204-R1 V36I Removal Tool



IM-V36G-JB203-R02

For further help regarding installation visit [lumino.lighting](http://lumino.lighting)