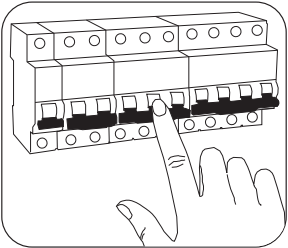
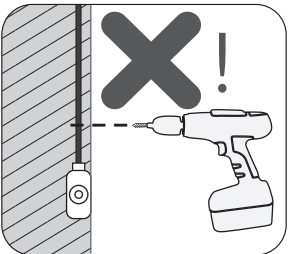


1

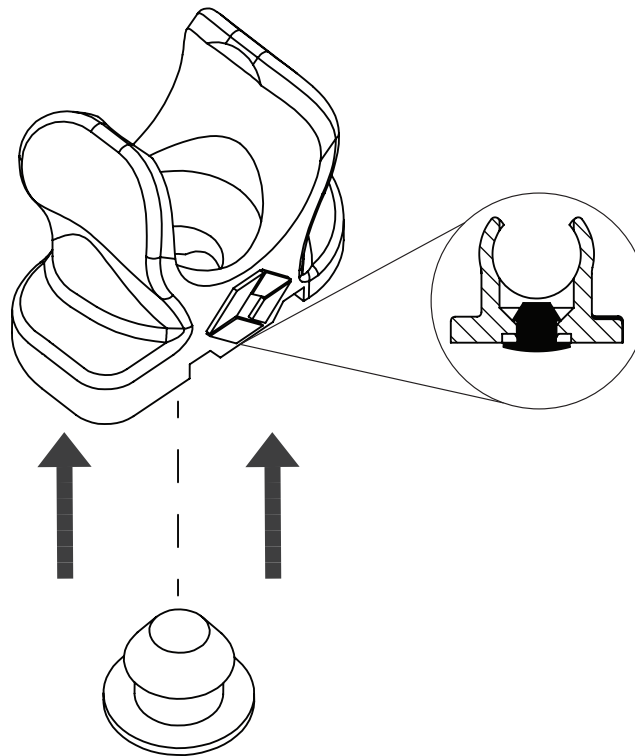
Check!



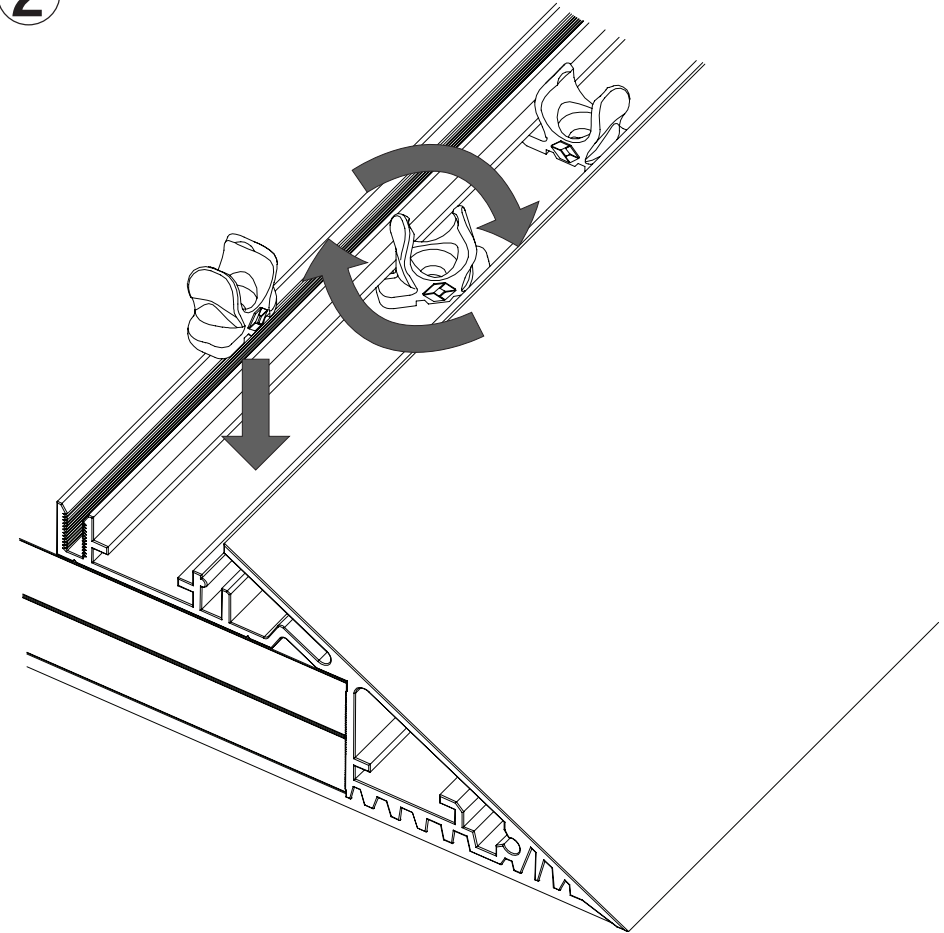
TURN OFF POWER!
COUPER LE COURANT!
STROM ABSHALTEN!
CORTE CORRIENTE!



CHECK THE WALL!
VÉRIFIER LE MUR!
DIE WAND ÜBERPRÜFEN!
COMPRUEBE LA PARED!



2



- Damage will be caused by incorrect input voltage or short circuit
- Ensure access and sufficient free moving air space around products and drivers
- Products and power supply gear must not be live wired
- Protect products from dust & paint during installation and use
- Shielded pair of cables will be required for dimming control signal if applicable
- Plan for loads, driver locations, dimming and suitable cable prior to installing
- For technical assistance contact your local Lumino distributor.
- Use only with class 2 power unit to UL 1310 standard
- Use only with maximum output 24VDC voltage Class 2 power unit

ORDER CODES

V10S-MA670-R1
V10S-MA650-R1
V10S-MA950-R1

V10S SolidEdge Rotation Mount PC White (x20)
V10S SolidEdge Rotation Mount PC White (x100)
V10S SolidEdge Rotation Mount PC White (x500)

IMV10S-SolidEdge Mount R02

For further help regarding installation visit lumino.lighting